

GENERAL ARRANGEMENT
R.H. AS SHOWN
L.H. OPP. HAND

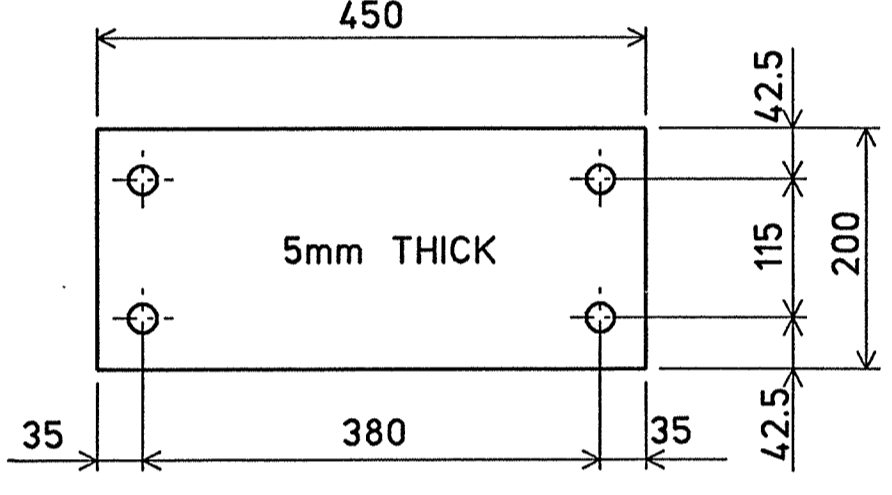
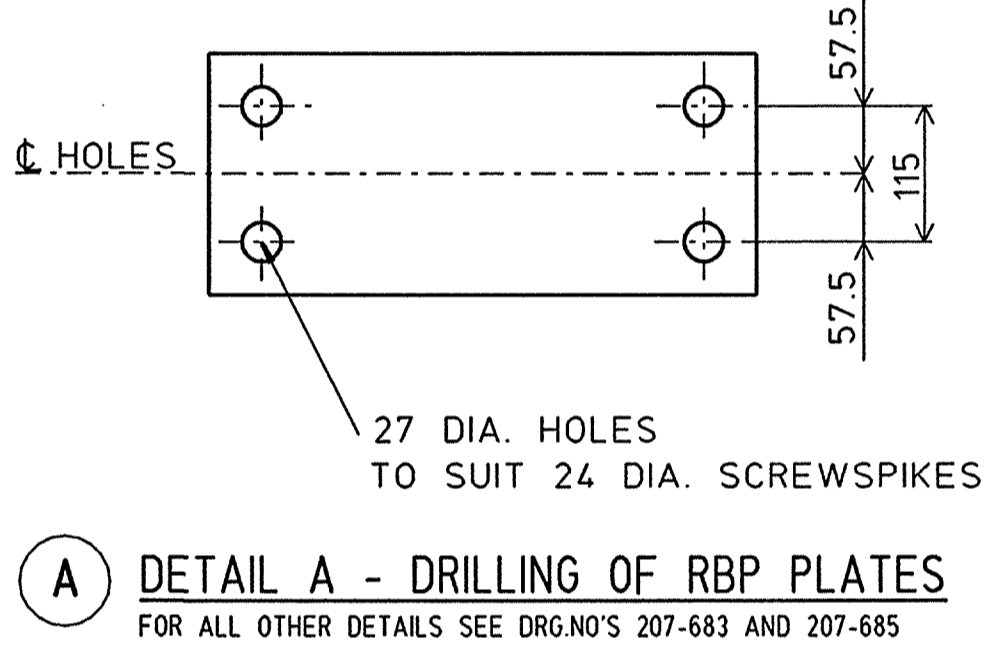
MATERIAL LIST				
ITEM	REQ'D	DESCRIPTION	MAT'L	REMARKS
1	1	R.H. SWITCH	60 kg H H RAIL	SEE DETAILS
2	1	R.H. STOCKRAIL	"	"
3	1	THROW OFF RAIL	"	"
4	13	RAIL BRACE TYPE 5	M.I.	DRG.No207-599
5	2	RAIL BRACE PLATE No.293	M.S.	SEE DETAIL 'A'
6	14	RAIL BRACE PLATE No.294	"	SEE DETAIL 'A'
7	16	RAIL BRACE BOLTS	H.T.S.	DRG.No91-170
8	8	SWITCH STOPS	"	DRG.No258-208
9	6	RAIL BRACE SWITCH STOP BOLTS	M.S.	DRG.No205A-370
10	1	HEEL BLOCK	DRG.No207-619	
11	1	M.S. RAMP	M.S.	DRG.No180-618
12	2	CHOCKS	C.I.	"
13	2	BOLT,NUT & SP.WASHER	M.S.	"
14	48	NIB BOLTS	H.T.S.	DRG.No205A-370
15	68	PANDROL PLATES	M.S.	SEE LIST
16	340	SCREWSPIKES	H.T.S.	DRG.No205A-374
17	136	PANDROL CLIPS	SPRING STEEL	TYPE E2003
18	48	FLAT ROUND WASHER	STEEL	A.S.1252-1973 PT 4
19	8	FLAT CAST STEEL WASHER	"	DRG.No258-208
20	4	FISHPLATES	H.T.S.	DRG.No207-627
21	8	FISHBOLTS (AS REQ'D)	"	DRG.No205A-323
22	340	DOUBLE HELCAL WASHER	M.S.	"
23	8	FLAT CONCRETE TIES	P.S.C.	DRG.No207-811
24	28	SPECIAL CONCRETE TIES	"	SEE DRG.580-717
25	2	CHAIR BOLT	H.T.S.	DRG.No91-187
26	2	SPRING WASHER	SPRING STEEL	DRG.No207-333
27	3	CLOSURES	SPRING STEEL	SEE LIST
28	16	PACKING PLATES	M.S.	SEE DETAIL

CLOSURES (27)			
CLOSURE	LENGTH	RADIUS	MID-ORD
A	13610	STR.	1
B	10260	STR.	1
C	7200	STR.	1

HEEL BLOCK DIMENSIONS (10)	
END	WIDTH
NARROW END	210
WIDE END	229

NOTE. THESE DIMENSIONS ARE FROM GAUGE FACE TO GAUGE FACE

STANDARD PLATES (5) (6)			
DESCRIPTION	REQ'D	MAT'L	REMARKS
RBP 293	2	M.S.	DRG.No207-683
RBP 294	14	"	DRG.No207-684



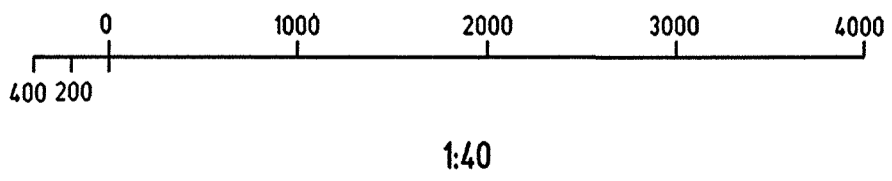
PANDROL BASEPLATES (15)			
DESCRIPTION	REQ'D	MAT'L	REMARKS
PS480	8	M.S.	DRG.No580-716
PS540	1	"	"
PS690	1	"	"
PS730	1	"	"
PS820	1	"	"
PS880	2	"	"
PS950	1	"	"
485S	41	"	"
489S	4	"	"
488S	4	"	"
487S	4	"	"

NOTES:
* TO BE SUPPLIED BY THE ENGINEER, ALL OTHER ITEMS TO BE SUPPLIED BY THE MANUFACTURER.
RAIL FLAT BOTTOMED 60kg/m H/H CONFORMING TO A.S.1085 PART 1 1981 OR AS SPECIFIED.

UNCONTROLLED COPY

Please check for latest revision at
RailCorp Central Plan room

Level 1 South Wing Phone: 8922 1401
477 Pitt St, SYDNEY Email: PlanRoom@railcorp.nsw.gov.au



REFERENCE :
STEELWORK DETAILS.....DRG.No.580-716
GENERAL ARRANGEMENT - CONCRETE TIES.....DRG.No.580-717

EDMS CV0169477 WARNING SCANNED IMAGE

This drawing and the information contained thereon have been created solely for a particular purpose and client. This is protected by copyright. You may not reproduce any of it in any form without the written permission of Rail Infrastructure Corporation. If you do, you may have to pay damages to Rail Infrastructure Corporation or you may be prosecuted.

owner and maintainer of the new rail network
RAILINFRASTRUCTURE CORPORATION

RIC CONSULTING TRACK DESIGN
ORIGINAL APPROVAL BY G.R. HASSALL 14/11/95
MANAGER, TRACK DESIGN DATE

CATCHPOINT - 60kg.		
6100 FLEXIBLE SWITCH ON CONCRETE TIES		
GENERAL ARRANGEMENT - STEEL WORK		
PROJECT No.	SHEET	A1
T.M.C. ID.	No. 580 - 715	B

AMD	REFERENCE	DESCRIPTION	SIGN/DATE
A	E-8	DETAIL 'A' ADDED	J Couper 3/9/96
B	F-6	CLOSURES ADDED	J Couper 14/12/01